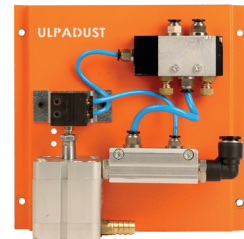
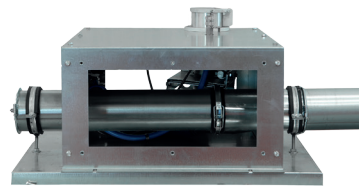
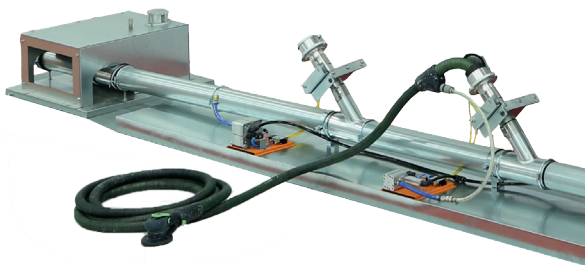
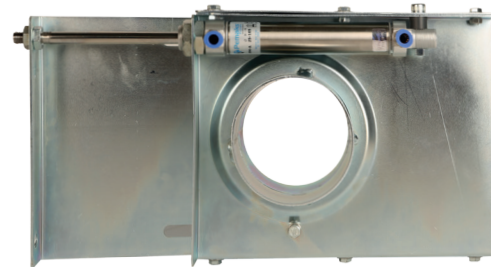


Options

Auto-pneumatic Vacuum Valve

The central filtration systems can be operated gradually by suction/vacuum points. In some applications, Ulpadust auto-pneumatic vacuum valve offer solutions that can control the amount of suction which lead to energy savings.



Downdraft Table

The method of vacuuming the dust from the tool is the most effective method for removing the dust from the environment. The downdraft table application destroys the source of dust in the resulting process.



Environmental Control Booth & Room Solutions

Environmental controlled work stations are generally used for keeping breathing zone clean while handling large and irregular parts.

